

care & maintenance

Maglin Site Furniture manufactures its products to the highest standards of excellence, design integrity, durability and dependability. This ensures a virtually carefree product. Unfortunately, some things are out of our control; such as misuse, vandalism or improper installation.

Should there be any of these occurrences; Maglin makes the following suggestions to help maintain and return the product to its original beauty.

general

We suggest regular inspections to identify any loose or missing hardware. These should be tightened or replaced immediately. If any part is found to be structurally cracked or broken it is recommended that the product be taken out of service until the appropriate repairs can be made. Contact Maglin for replacement parts.

Should dirt from the environment build-up on any surfaces wipe with a soft cloth and mild detergent. Abrasive cleaners, brushes, coarse steel wool and pressure washing should be avoided.

metal

The Maglin metal-finishing system has been designed and developed through the input of coating experts and more than twenty years of Maglin experience. It sets a standard for coatings and is unsurpassed for public site furniture. The final layer of electro-statically applied powder coat shrugs off the elements.

If the finish is marred by a sharp object and the steel is exposed, take a fine abrasive sandpaper to the area to improve the adhesion of the primer and touch-up paint. A quality grade exterior metal primer and top coat of matching color enamel should then be applied over the prepared surface. Upon request, Maglin will supply metal paint samples for color matching.

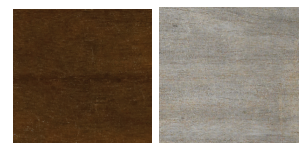


Ipe

Ipe can be left on its own and is considered maintenance free. It will weather to a gray patina.

If it is undesirable to have wood remain gray, maintenance coats can be applied periodically every few months using hardwood exterior penetrating stains such as Ipe Oil, or Penofin hardwood formula.

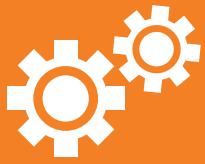
Varnishes or coatings are not recommended. Care should be taken when reapplying stain and should not be left to dry on non-wood surfaces.



IPE

AGED IPE





care & maintenance

hdpc (High Density Paper Composite)

HDPC is considered a maintenance free material. It can become faded over time to varying degrees depending on the color and exposure to the sun. The best way to maintain the original look is to periodically apply a coat of mineral oil. This can be done every few months as the mineral oil will fade due to environmental elements and staining can occur. This can be compounded by the age, color and the amount of maintenance upkeep performed on the material. Food oils can be some of the most difficult to remove. To reduce the appearance of the stain the area should be cleaned as best as possible with mild soap and water. Then reapply the mineral oil to help blend out the oily stains and improve the look of the material.

hdpe (Recycled Plastic)

To maintain the original finish, clean with soap and warm water; a soft nylon brush may be required. When cleaning, care should be taken while scrubbing and should not be performed too vigorously. This will ensure the surface is not scratched or buffed, creating an isolated glossy spot.

graffiti removal

Surfaces and coatings used in Maglin's site furniture products have been selected because they are resistant to graffiti and vandalism. When graffiti is required to be removed, please follow the suggested recommendations:

Powdercoated Surfaces

Due to the inherent hardness of powdercoat finish, normal spray paint does not adhere well, making removal easy. Using a water based paint stripper and "0000" ultra fine steel wool, spray paint can be buffed off. Using a coarser steel wool will affect the finish sheen of the powdercoat. Black permanent marker is a dye based product and can permanently mark the coating, especially on lighter colors. If cleaned off quickly with paint thinner or rubbing alcohol little to no marking will be visible. Marker left to age can be minimized using the same process but cannot be completely removed. Using a very fine polishing compound and "0000" ultra fine steel wool can also minimize dye marker stains.

lpe

Wait for paint to dry and use a water based paint thinner to remove. A mixture of bleach and water may also work. Sand in the direction of the grain using 100 grit then 120 grit sandpapers until the paint is gone. Acetone can also be used if permanent marker is suspected. The wood color will change in the treated area, but will age to match the rest of the wood in time.

High Density Paper Composite (HDPC)

An alcohol based cleaner may work, like a 'goo gone' brand or something similar. If that is unsuccessful, HDPC can be lightly sanded to remove the graffiti. If graffiti is on a seat top for instance, it would be advisable to sand the entire top surface for a uniform look as the oxidation would change the color and the sanding would bring it back to the original color. 180 grit would be sufficient to remove any vandalism and finish off by buffing with fine steel wool.

Recycled Plastic (HDPE)

HDPE is a self lubricating material and therefore not many materials adhere well to it. A light household non-abrasive cleaner will remove most materials. Use water based paint strippers and alcohol based cleaners with caution as they may affect the sheen of the finish surface. A stiff nylon brush will effectively clean within the surface grooves and crevices.

