

# Maglin Site Furniture Product Overview

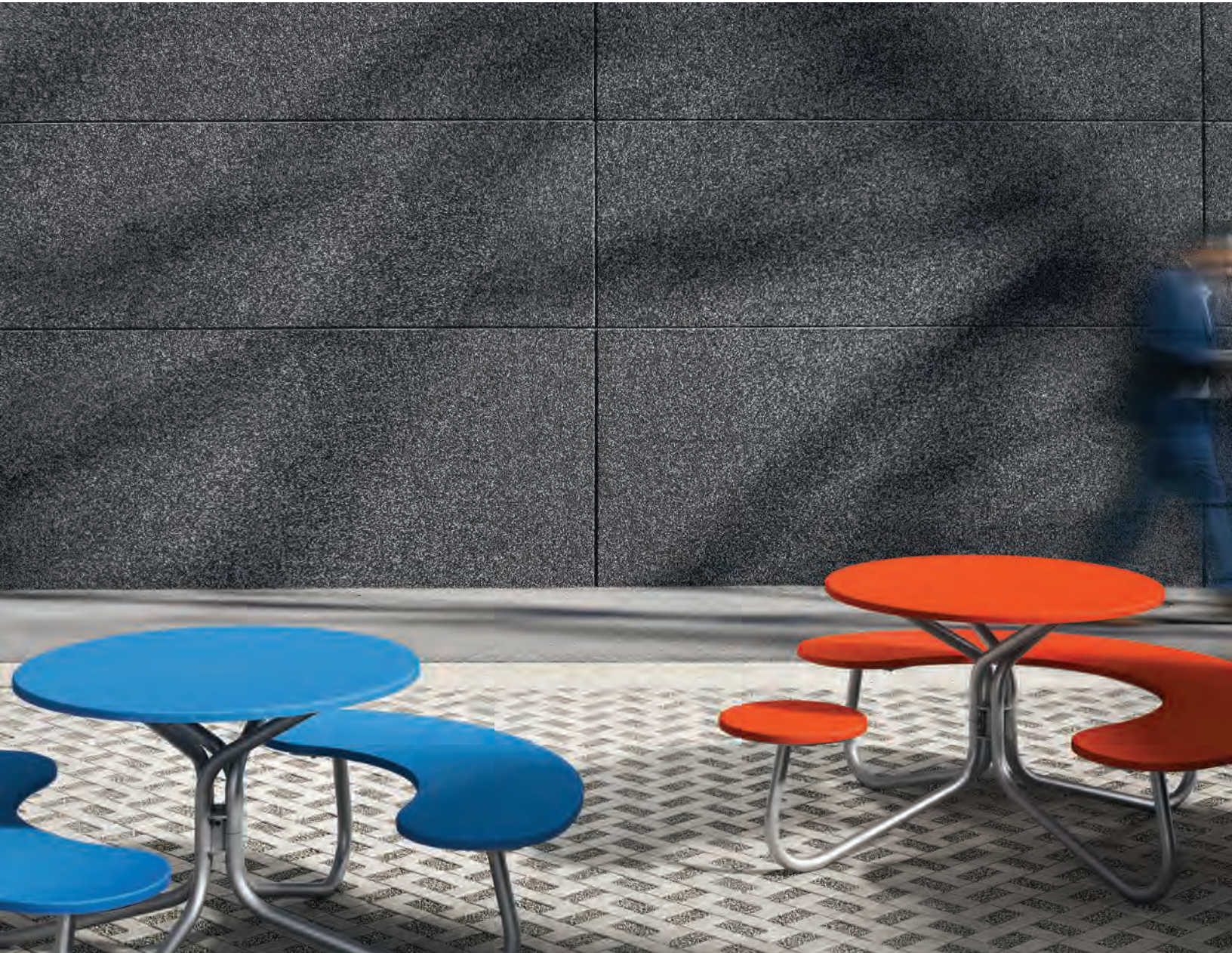


**MAGLIN®**  
Site Furniture

**MAGLIN SITE FURNITURE**

P: 800 716 5506 | E: [sales@maglin.com](mailto:sales@maglin.com)  
[www.maglin.com](http://www.maglin.com)

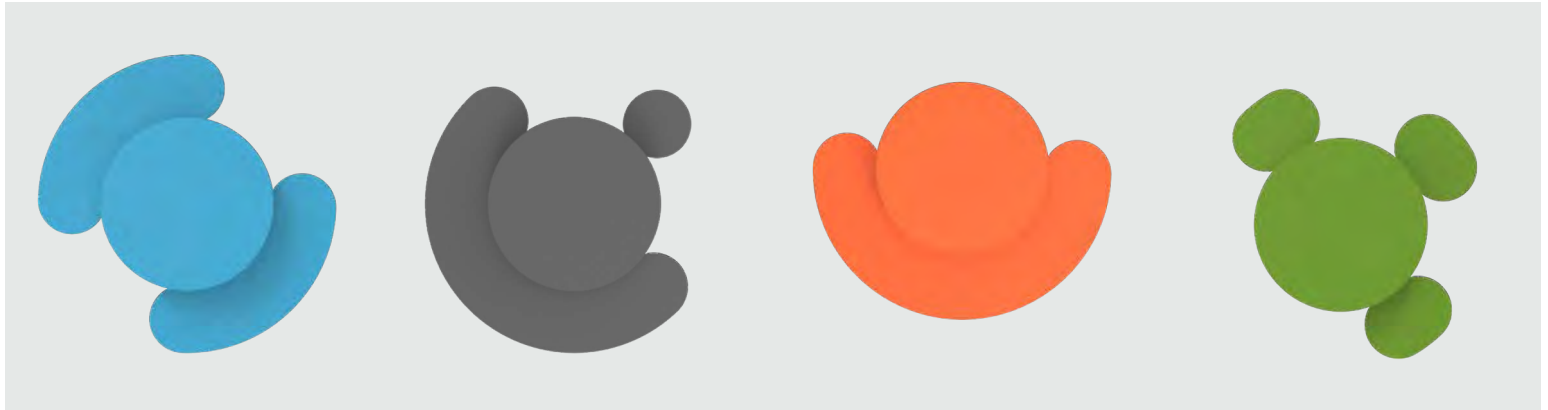
# FAVA Collection



**MAGLIN®**  
Site Furniture

# FAVA Collection

## Product Overview



### Dynamic cluster seating with a twist

With seating for 4 – 6 and wheelchair accessible options, FAVA makes sure everyone can comfortably have a seat at the table. With ample table surfaces in a variety of vibrant High Density Polyethylene colors, FAVA delivers durability to well-used spaces.

Table Size	40in Diameter
Seation	4 Single Seats 3 Single Seats 2 Double Seats 1 Single Seat & 1 Quad Seat 1 Quad Seat
Material	Orange Peel Texture High Density Polyethylene
Options	Wheelchair Accessible Umbrella Hole



Accommodates 4 people



Accommodates 4 people - WCA



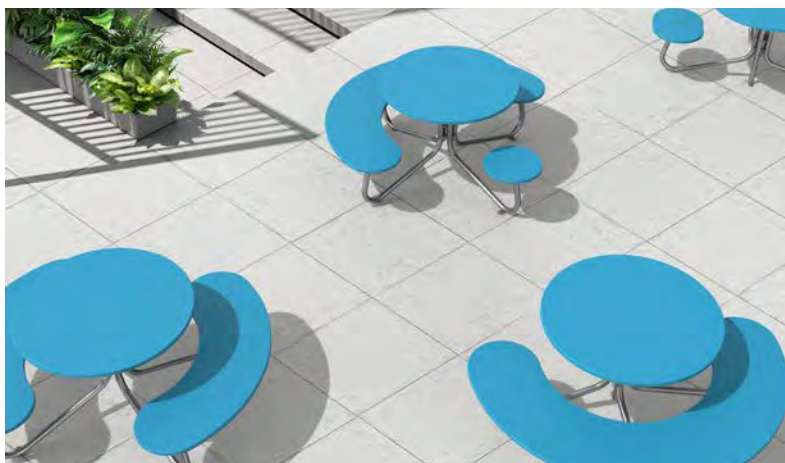
Accommodates up to 6 people



Accommodates up to 5 people



Accommodates 6 people - WCA (2)



# ALUM Collection



# ALUM Collection

Product Overview



## Outdoor-ready design meets indoor-worthy style

We’ve thought through every detail in the ALUM series, giving you a contemporary line of outdoor furniture that’s flexible, movable and definitely durable enough to stand up to all the elements.

Chair Options	Café Chair – Arm and Armless Lounge Chair
Table Options	Café Table Lounge Table/Footrest
Material	Powdercoated Aluminum
Patterns	Prosecco & Empire
Location	Indoor & Outdoor Use
Design	Frank Crawford



# MUG Collection



# MUG Collection

## Product Overview



### Modern sophistication meets street furniture design

A collaboration with Italy’s Gibillero Design, MUG earns its playful name from the characteristic handle that defines each piece and presents the perfect opportunity for colorful expression.

Waste/Recycle Options	Ipe / Thermal Ash wood slats Powdercoated steel slats Vinyl graphics
Planter Options	Ipe / Thermal Ash wood slats Powdercoated steel slats
Bike Rack Options	Surface mount or Direct burial installation
Material	All-steel welded frame construction
Location	Indoor & Outdoor Use
Design	Gibillero Design



# FLEXX Collection



# FLEXX Collection

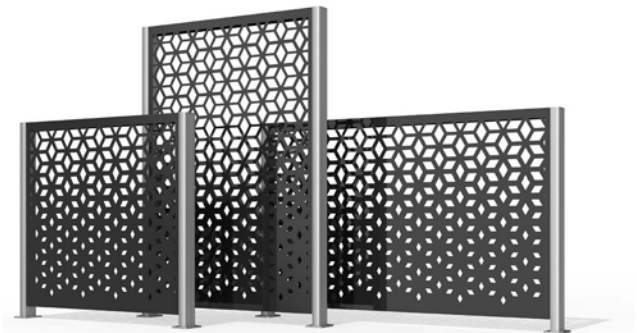
## Product Overview



Transform your space into  
beautifully segmented zones

Perfect for creating an airy outdoor room, highlighting a row of plantings with a sunlight-filtering wall, or drawing attention to a design focal point – FLEXX panels respond to the heights of your imagination.

Sizes	4 FT W x 4 FT H
	4 FT W x 6 FT H
	6 FT W x 4 FT H
Patterns	Fusion
	Interlock
	Kaleidoscope
	Matrix
	Summit
Material	11-gauge mild steel
Options	Surface mount or direct burial
	Gate



# PIXEL Collection



# PIXEL Collection

## Product Overview



Simple in form and  
highly versatile in function

Pixel's playful building blocks can be configured to promote social interaction and community well-being. And with fast, easy installation and near limitless possibilities, you can design as your needs evolve.

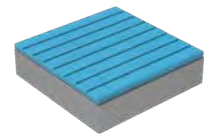
Block Height	Tall & Short
Backrest Options	Standard Back Lounge Back
Material	Ipe / Thermal Ash Wood Chroma (Circles / Lines) Steel (Circles / Lines) High Density Polyethylene (HDPE)
Patterns	Circles & Lines Double Slat & Steel (HDPE)
Options	Planter Wood Cladding (1 / 2 sides) Square & Rectangular Wood Profile



Tall  
24" w x 16 3/16" h



Short  
24" w x 5 5/8" h



HDPE - 6 Colors  
Double Slat / Steel



Wood  
Square / Rectangular



Steel  
Circles / Lines / Planter



Chroma  
Circles / Lines



# OGDEN Collection

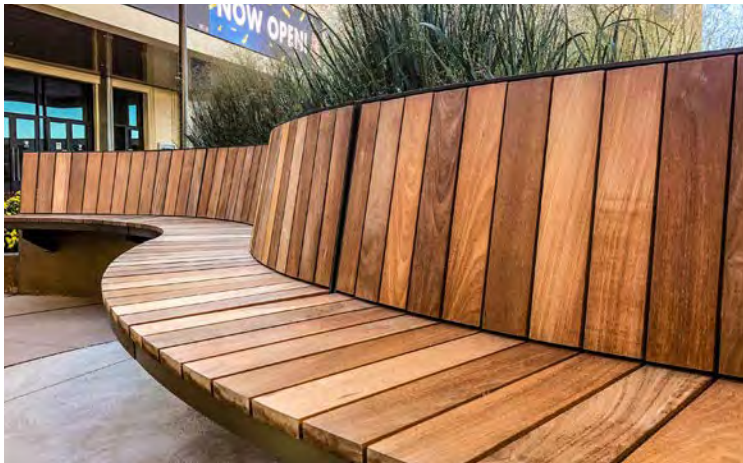




## Backed and backless, curved, circular and straight bench options

Customize Ogden’s modular bench collection with a variety of radii, seat material and mounting options to create a unique design to suit your individual needs.

Radius Ranges	10" (180°) to 1300" (3°)
Straight Options	3 FT, 4 FT, 5 FT, 6 FT
Material	Ipe / Thermal Ash Wood High Density Paper Composite High Density Polyethylene
Slat Orientation	Left to Right   Front to Back
Mounting Options	Pedestal Square Wall Cantilever



# KONTUR Collection



**MAGLIN®**  
Site Furniture

# KONTUR Collection

## Product Overview



Simple, yet refined,  
durable and strong

The Kontur Collection offers stylish surfaces with a Scandinavian aesthetic. Kontur's spare lines belie the strength of its welded steel frame – durable enough for years of outdoor use in high-traffic environments.

Chair Options	Café Chair Bar Height Stool
Table Options	Café Table Lounge Table Bar Height Table
Accessories	Umbrella base for café table
Material	Powdercoated Steel
Location	Indoor & Outdoor Use
Storage	Chair, stool and lounge table are stackable



Chair



Café Table



Lounge Table



Bar Height Stool



Bar Height Table



Umbrella Base



# 720 Collection



**MAGLIN®**  
Site Furniture

# 720 Collection

## Product Overview



### Enhance your outdoor living experience

Ergonomically constructed to combine comfort with modern design, Maglin’s 720 chairs are made from laser cut and formed steel, and seats come in your choice of Ipe wood or Powdercoated Steel.

Chair Options	Chair Lounge
Material	Powdercoated Steel Ipe Wood
Installation	Surface Mount Freestanding (with Glides)
Location	Indoor & Outdoor Use



MCH-0720-00002 Lounge  
Powdercoated Steel



MCH-0720-00003 Lounge  
Ipe Wood



MCH-0720-00001 Chair  
Powdercoated Steel



MCH-0720-00004 Chair  
Ipe Wood



# ICONIC Collection



# ICONIC Collection

## Product Overview



The perfect balance of classic style and modern design

Seating, tables and bike racks from the Iconic Collection reference classic form and function while enlivening outdoor spaces with clean and contemporary lines. Available in Ipe or Thermally Modified Ash wood.

Bench Options	70in L Backed / Backless 48in L Backless Armed / Armless
Table Options	70in L
Bike Rack Options	Surface Mount
Material	Ipe Wood Thermally Modified Ash Wood



Backed Bench  
70in L



Backless Bench  
48in L / 70in L



Table  
Ipe Wood / Thermal Ash



Bike Rack  
Surface Mount



# FORO Collection



# FORO Collection

## Product Overview



## Recharge your Outdoor Space

Complete with standard and bar height tables and seating, the collection features round and square tables available in two sizes – 30" and 36". Configuring your Foro tables and chairs is easy with a selection of surface patterns, materials, as well as classic and bright powdercoat colors.

Chair Options	Café Chair Bar Height Stool
Table Options	Café Table – 30" / 36" Bar Height Table – 30" / 36"
Table Style	Round – Circle, Line Patterns Square – Circle, Line Patterns
Material	Powdercoated Steel High Density Polyethylene Ipe Wood / Thermal Ash
Accessories	Umbrella Hole, Foot Ring
Installation	Direct Burial, Freestanding, Surface Mount



Chair



Square Café Table



Round Café Table



Bar Height Stool



Square Bar Height Table



Round Bar Height Table



# LEXICON Collection



# LEXICON Collection

## Product Overview



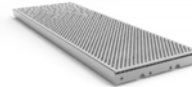
## Modular and Adaptable Solutions

Use an array of easy-to-assemble geometric shapes to create infinite seating configurations including curved, straight, backed, backless, and integrated side tables. Standard and bar height tables pair well with benches or chairs and invite groups to gather.

Seat Options	4 FT, 6 FT Straight, Curved Backed, Backless
Table Options	4 FT, 6 FT 2 FT Side Extension Standard, Bar Height
Material	Ipe / Thermal Ash Wood High Density Paper Composite High Density Polyethylene Perforated Metal
Seating Mounting Options	Flat Steel Leg Steel Tube Leg Triangle module Square module



Curved Seat  
4 FT / 6 FT



Straight Seat  
4 FT / 6 FT



Square Module



Triangle Module



Standard Table  
4 FT / 6 FT



Bar Height Table  
4 FT / 6 FT

